

LABELS FROM THE BERTRAND - \$7.⁰⁰

On April 1, 1865, the steamboat *Bertrand* sank in the Missouri River, taking a cargo of groceries and supplies to the bottom instead of taking them to the Montana Territory. In 1968, the steamboat was excavated from the mud, and many of the items are on display today at the DeSoto Wildlife Refuge.

Through photographs taken and notes written by the archeologists during the excavation and cataloging process, we have a record of what those articles looked like. The paper labels in most cases did not survive the 103 years in the mud, but there were enough pieces and scraps left in some cases to piece together many examples.

The enclosed set of labels comes from the *Bertrand*. In order to understand how much of the label is derived from description and how much is derived from photographic evidence, we have enclosed documentation to show you the starting point for our reproduction labels. Hopefully, you will see how much is available and how much is conjecture.

This set of labels contains:

2 Ginger labels for Bottles

4 Jelly labels for Jars

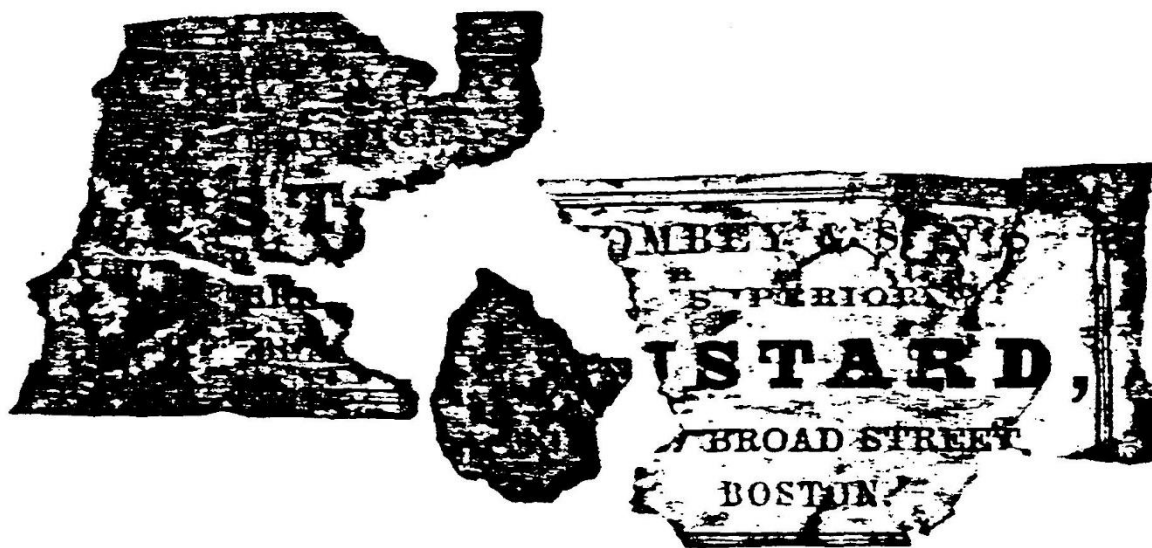
1 Mustard label for a can

1 Peach can label for a can

1 Lemonade label for the can body and top

1 Yeast Powder for a can

1 Shoe Blacking Label for a tin



Toombey & Sons Mustard Label

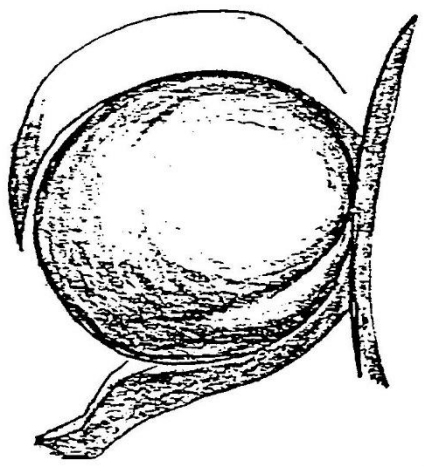


William Brown's Essence of Ginger Bottle

0 N L.

PEACH CAN LABEL IN
TOLD
Actual 3120
CAT. '10.
No. 1289-3375

PEACHES



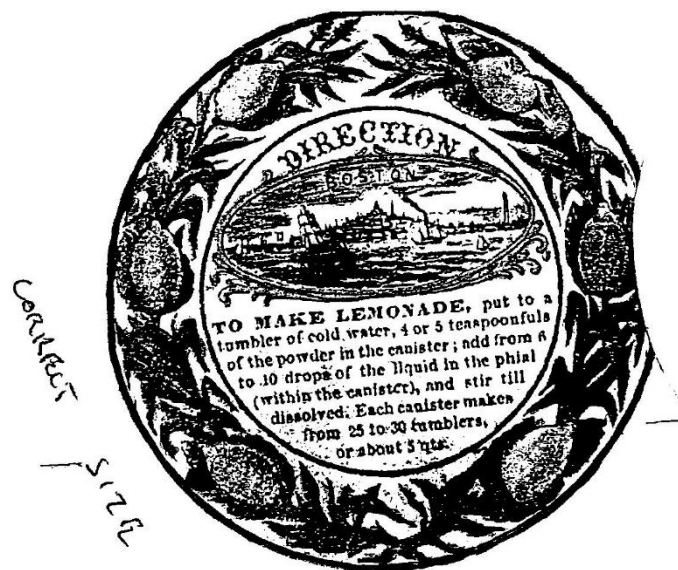
PEACHES

Choice Peaches Can Label

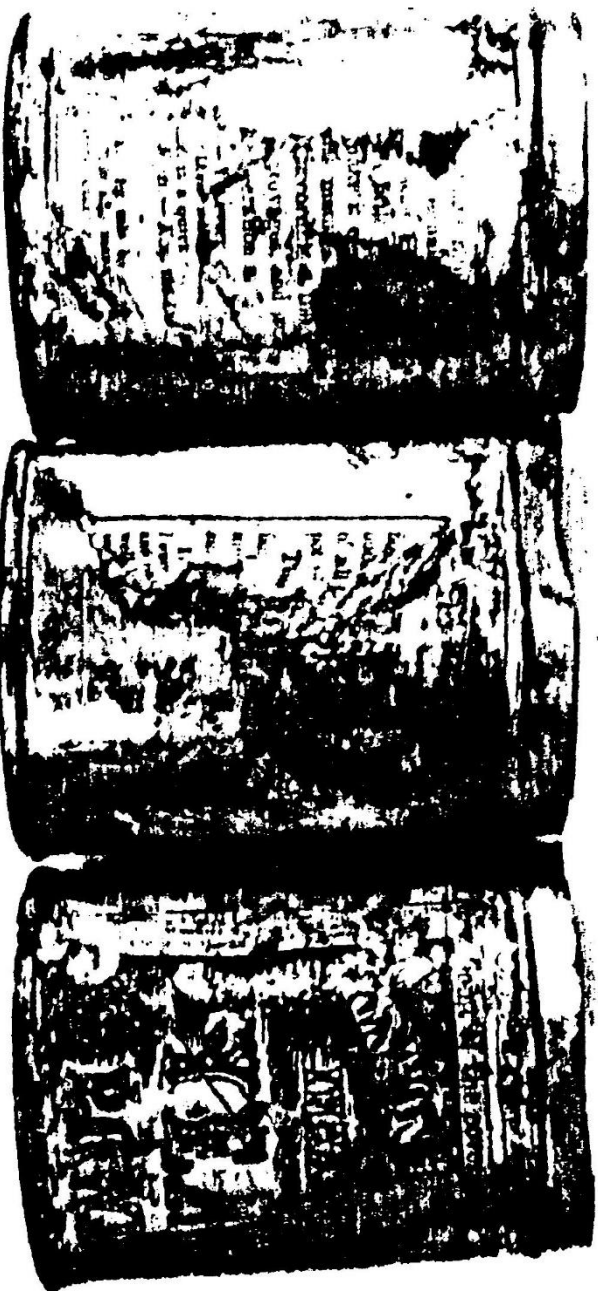
Sketch
34



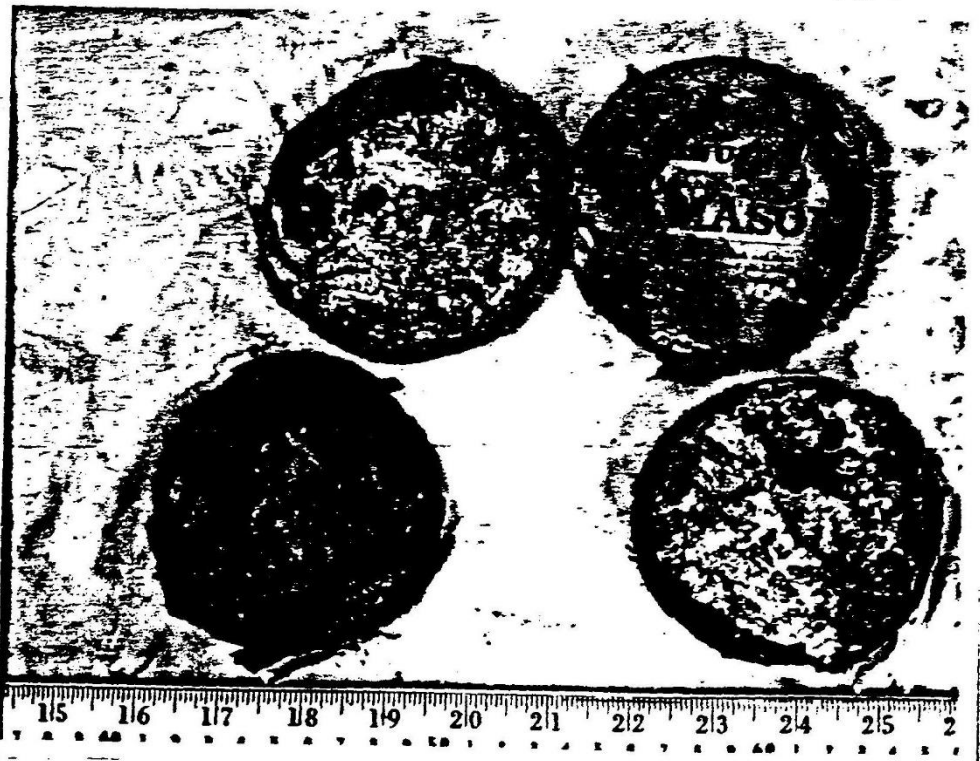
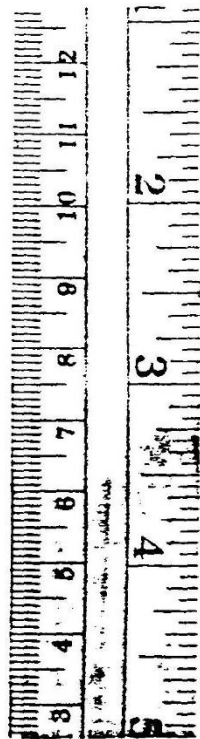
Preston & Merrill's Lemonade Can

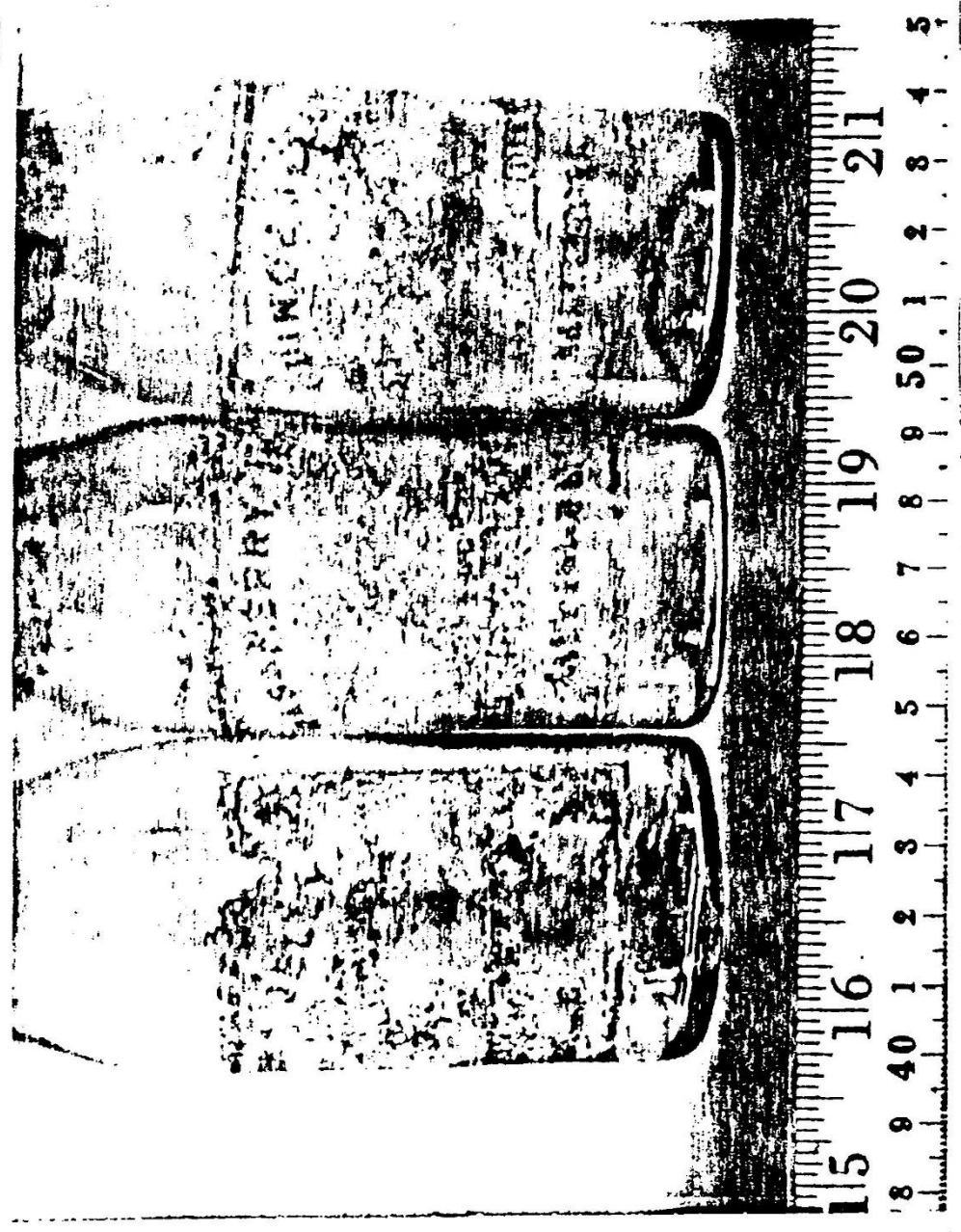


Preston & Merrill's Infalible Yeast Powder Can



J. S. Mason Blacking Tin





Numsen & Carroll Jelly Bottles